



## Ronald McDonald House Charities EDMed®



Ronald  
McDonald®  
Learning  
Program

Online teacher professional development course designed to raise awareness of the educational needs of students with chronic illness and provide them with strategies on how to include these students.

### Background

Ronald McDonald house Charities is committed to supporting chronically ill children continue to learn during treatments and hospital stays, and re-enter school. The EDMed® course aims to provide teachers with the knowledge and understanding they need to facilitate this endeavour.

### The challenge

To provide high quality teacher professional development to a geographically dispersed audience possessing varying levels of computer literacy, and who are often time poor.

### The solution

Develop smart and clean online solutions highly story-based, to allow not only a transfer of knowledge but opportunity to apply this in real-life situations.

The EDMed® online module is largely story-based, and provides strategies to help reduce the impact of physical, social, academic and emotional stresses to chronically ill students. Content is designed to allow transfer of knowledge through multiple opportunities to apply these strategies in real-life situations while aligning with WCAG 2.0 AA accessibility guidelines.

Interaction with the content is achieved through:

- Student stories
- Teacher stories
- Actual student journeys with video and question prompts
- An interactive impacts and strategies toolbox
- Sibling stories, and more.



### The result

A high quality, professional and accessible online module able to be delivered anywhere, anytime using any device, including tablets.

**Development tool:** Articulate Storyline 2.

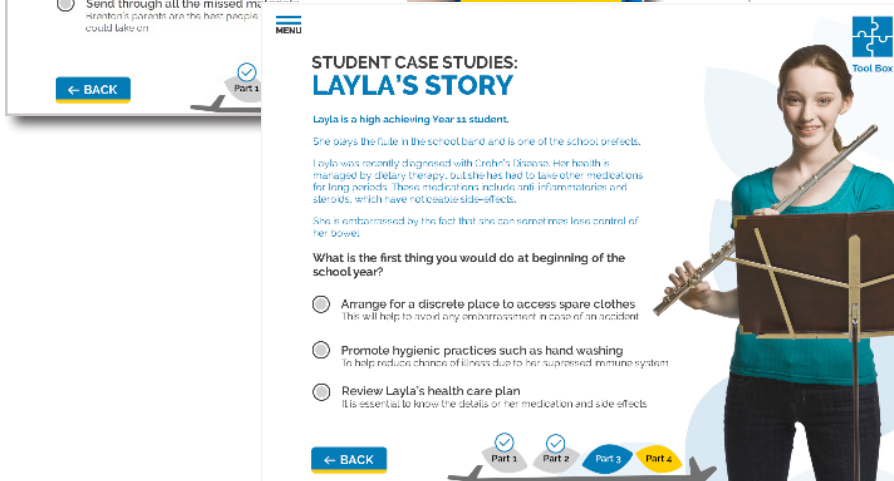
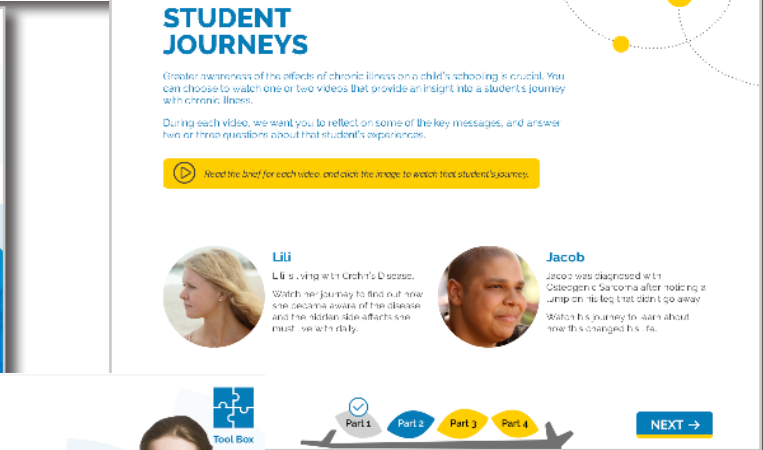
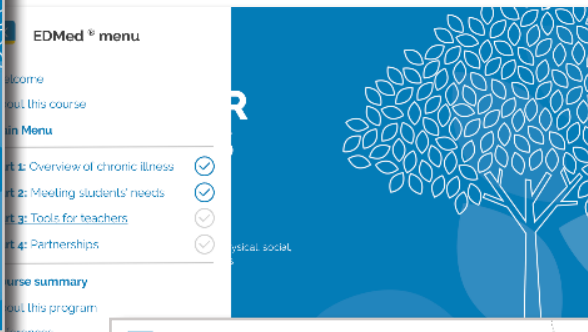
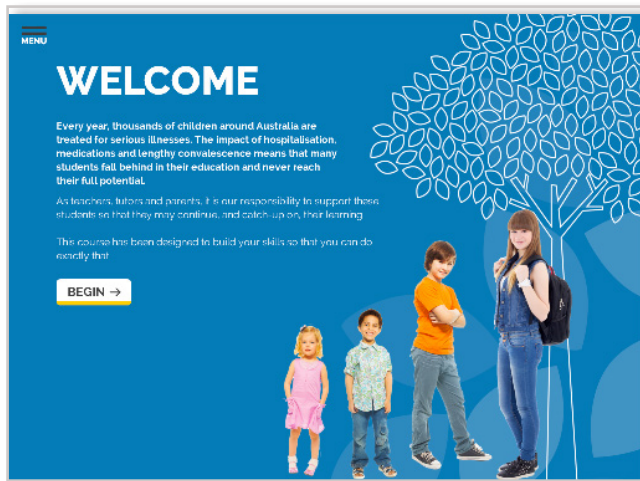
**Graphic design:** Cameron McCulloch.



*This course was awarded Gold Winner for "Best eLearning Design - Free eLearning Resource" - RMHC Australia & Visumation in 2019.*

## Screen samples

Find a sample of screen layouts and interactions below.



**Produced for:**  
Ronald McDonald House Charities  
<https://www.rmhc.org.au/>



**Contact RMHC:**  
Natali Milovanovic  
e: [Natali.Milovanovic@rmhc.org.au](mailto:Natali.Milovanovic@rmhc.org.au)  
m: (0415) 633 386

**Services provided by VISUMATION:**  
Instructional design and development  
Template design  
Module development in Storyline2



**Contact VISUMATION:**  
Kim Gillham  
e: [hello@visumation.com.au](mailto:hello@visumation.com.au)  
m: (0433) 431 281  
ABN: 50 824 635 173